

NLITE GUIDE



nLite is a GUI for permanent Windows component removal by your choice. After removal there is an option to make bootable image ready for burning on cd or testing in virtual machines. With nLite you will be able to have Windows installation which on install doesn't include, or even contain on cd, unwanted components.

You can integrate drivers, hotfixes and ServicePacks into your W2k, XP or W2k3 installation files, remove components and tweak it. If you like you're able to make very small ISO-images by cutting things out of it. An installed system from such a CD can be realized in less than 300MB drive space for XP and less than 200MB for Win2k (with Documents & settings, without pagefile.sys).

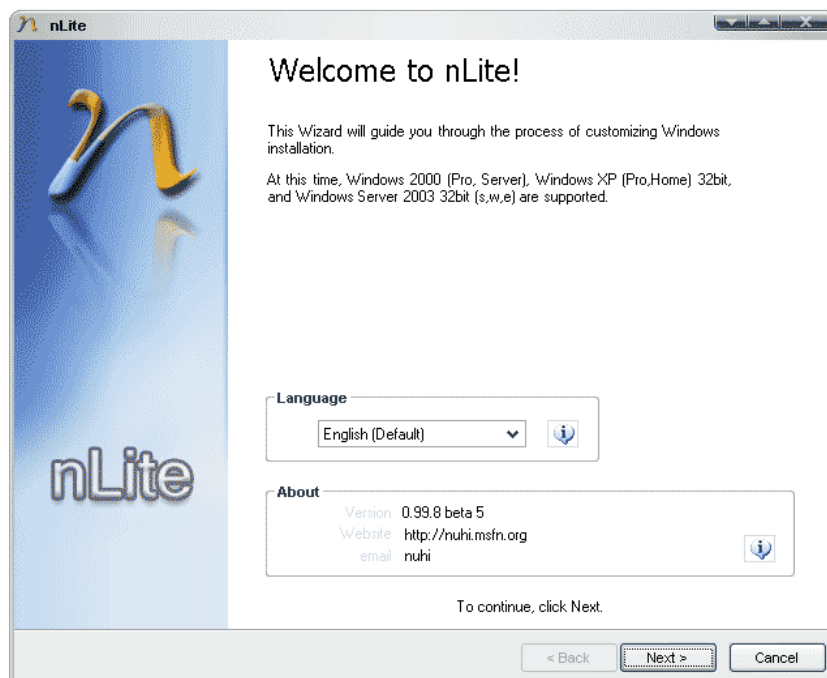
You have always thought it was impossible to have an XP-Installation without the bundled InternetExplorer or the MediaPlayer? Forget it...that is history! Have a look at nLite. You will be suprised what can be removed.

These descriptions here refer to nLite v0.99.8 beta 5. Because it is not a final release, some things may still change on the features or functionality before it is finalized.

After 1.0 developement will continue.

Sorry for my very long delay with writing a accurate guide, but XP has a "rust in peace" being on my hdd...i've switched to Debian :-)

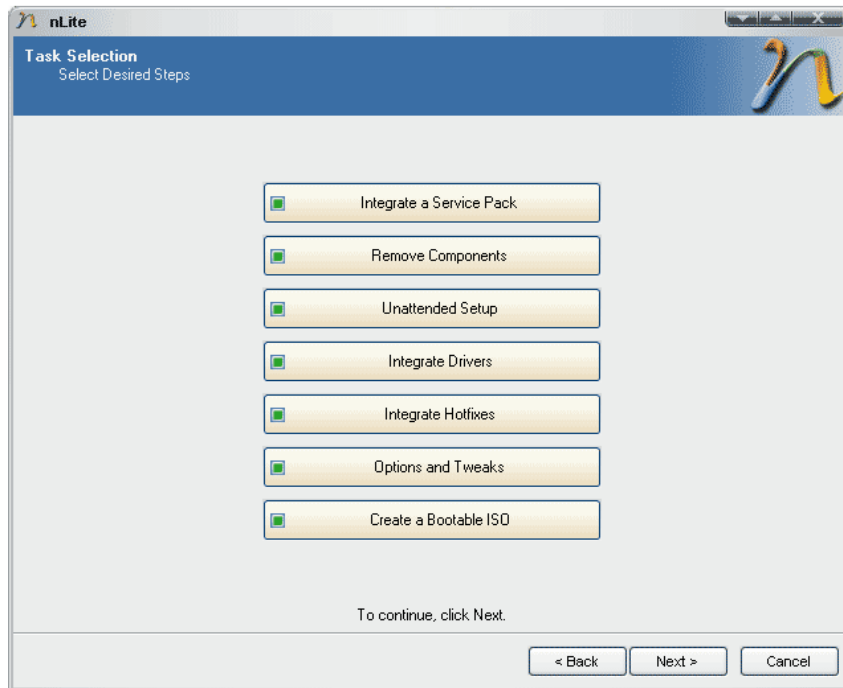
- Create a folder somewhere on your harddisk (with enough space on it) called "xp_data_engl" or something else
- Copy the full content from the OS-CD (can be w2k/XP/w2k3...every version) in the CD-ROM into this new folder
- Start nLite



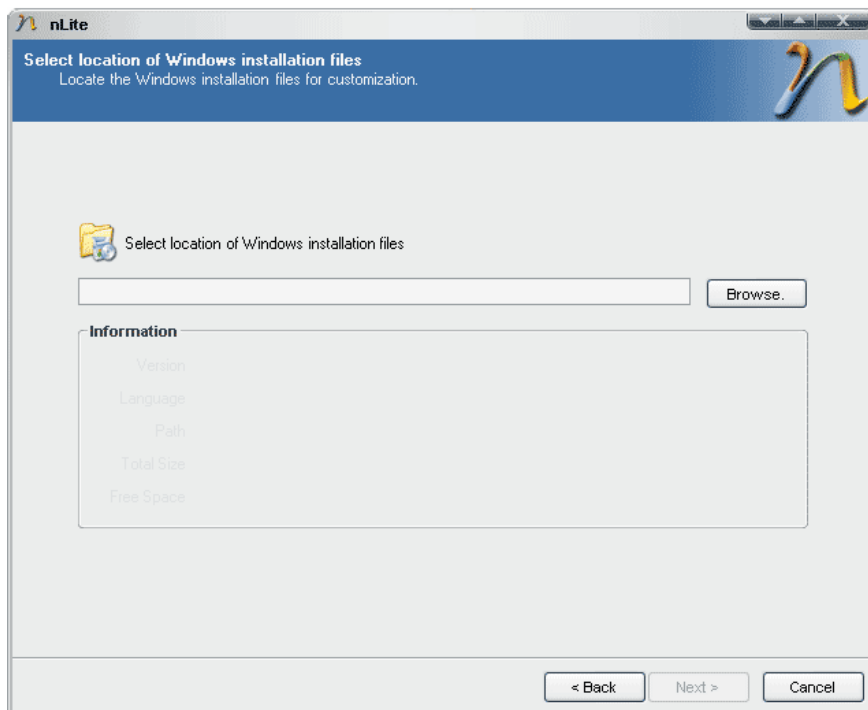
NLITE GUIDE



- nLite welcomes you, so be gentle and continue by clicking on "Next"



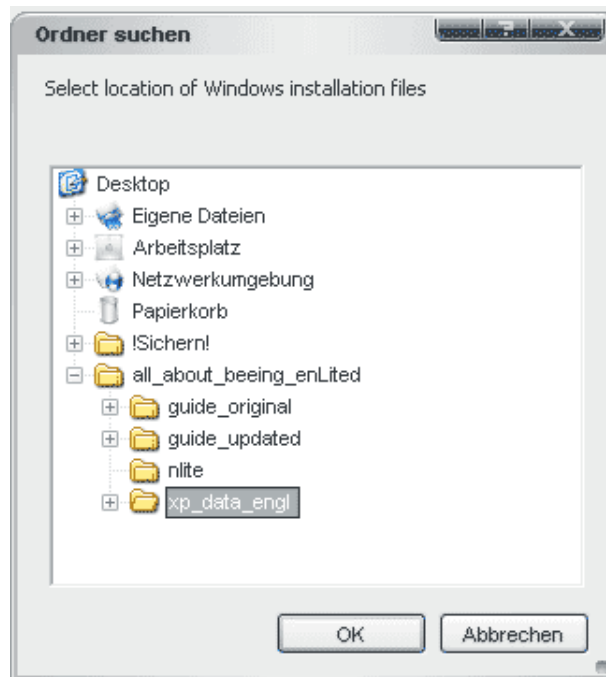
- It is easy to see that nLite is going to be a all-in-one tool. Check the option you desire (in the example above all checkboxes are activated) and go on with a click on "Next"



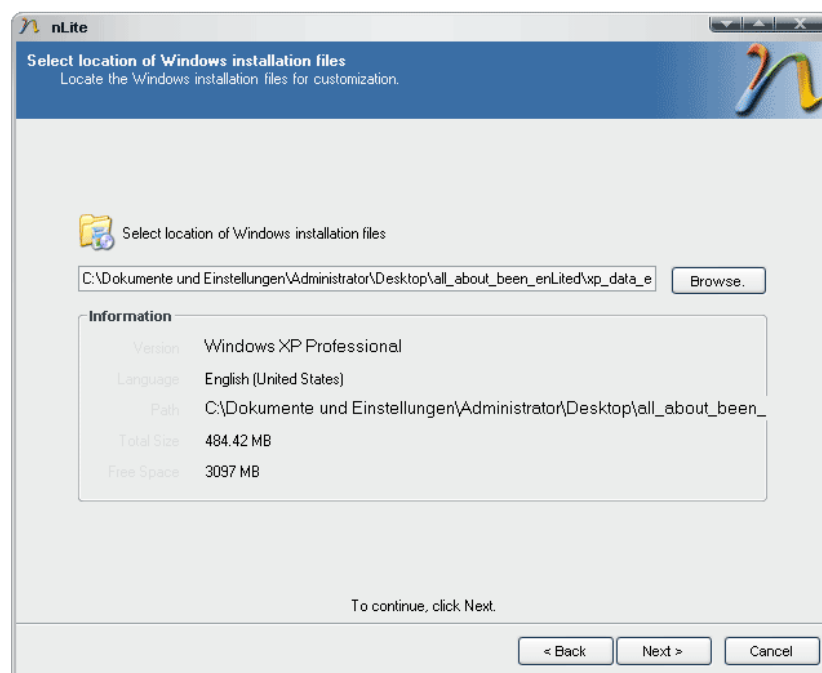
NLITE GUIDE



- Show now nLite the path to the folder with the w2k/XP or w2k3-content on the harddisk (the one you've made above). Click for that on "Browse"



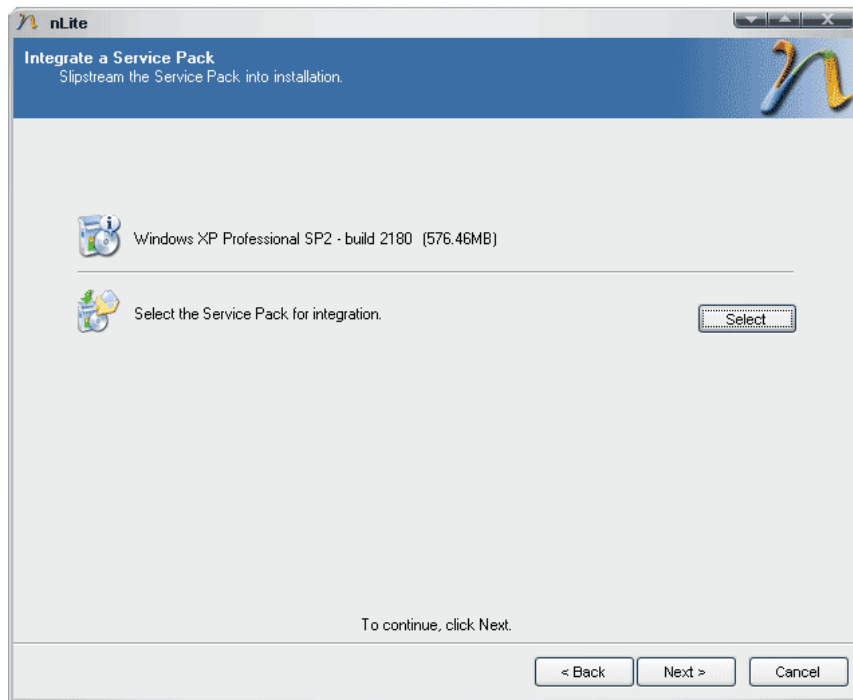
- nLite recognize the language and version of your windowsversion :-)



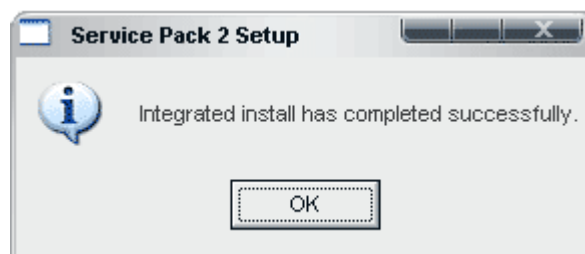
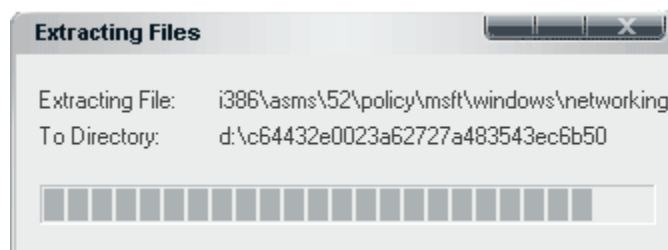
NLITE GUIDE



- Now you can point nLite the path to the *.exe-file from the ServicePack



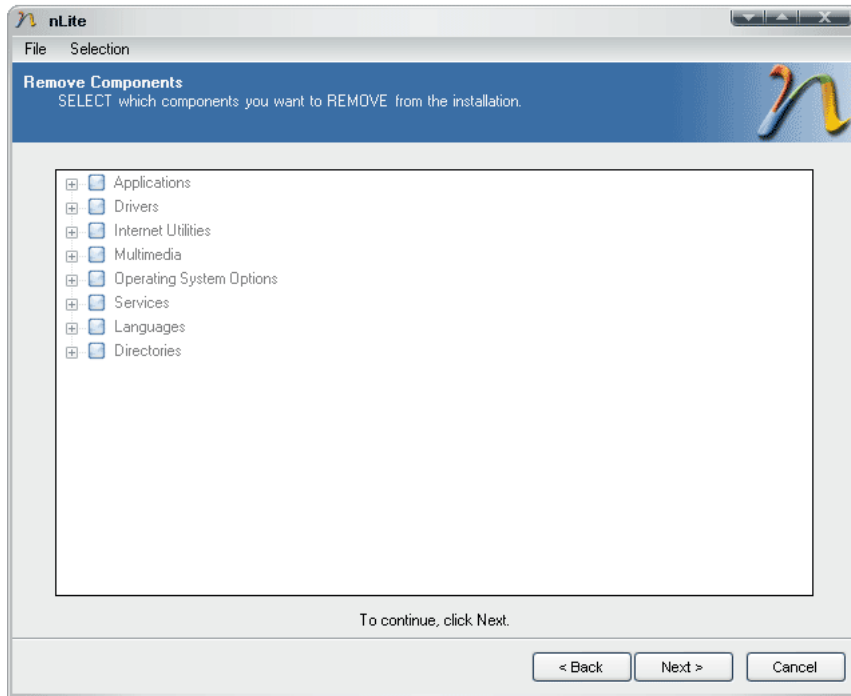
nLite extract the ServicePack and does automatically integrate it :-)



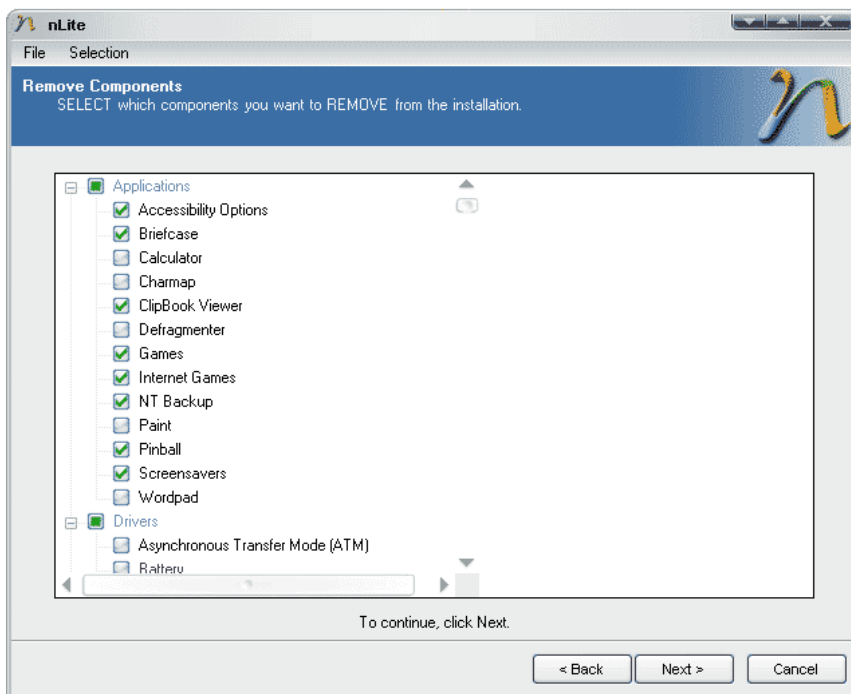
NLITE GUIDE



- Click on "Next" and you find yourself in front of the "Remove Components" window



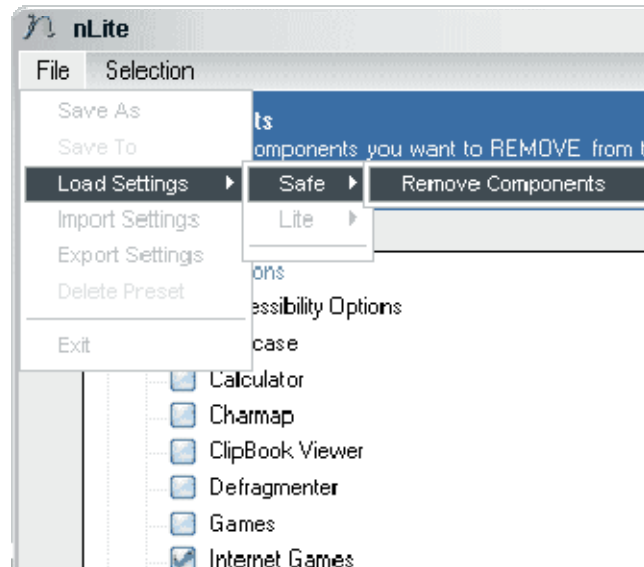
- Select what you like



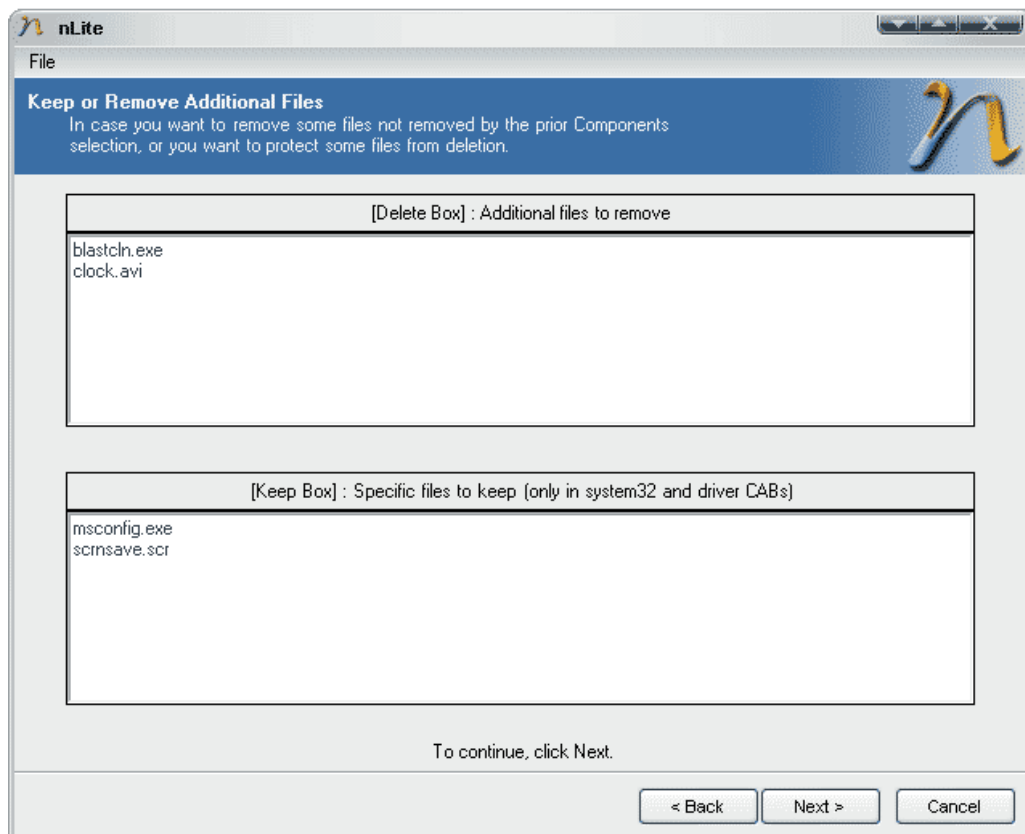
NLITE GUIDE



- It is also possible to choose preselections



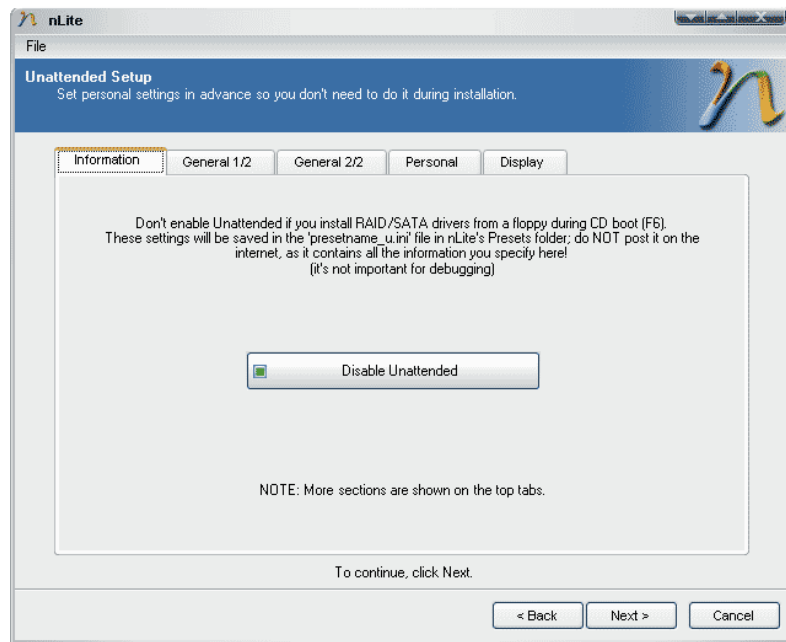
- At least you can fill in additional files to remove or keep from the CD you're going on to build



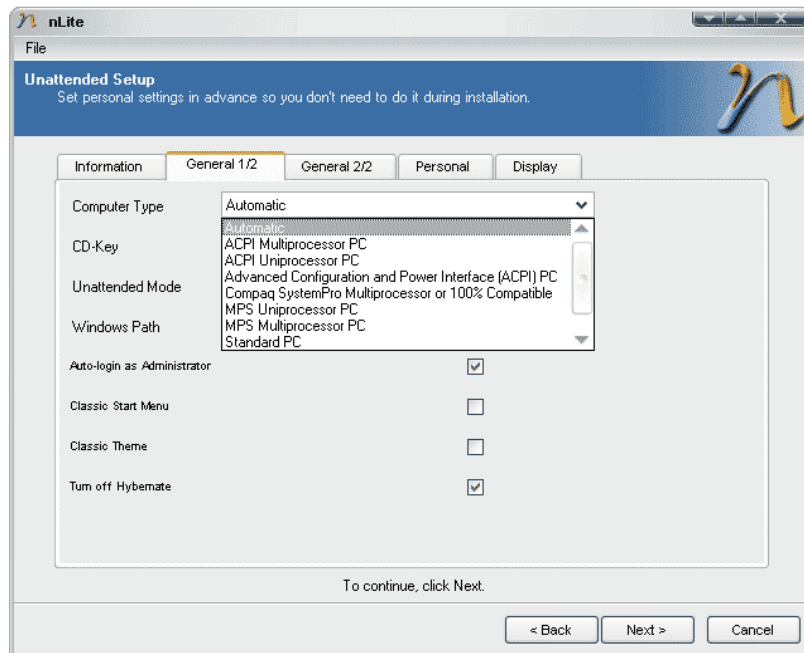
NLITE GUIDE



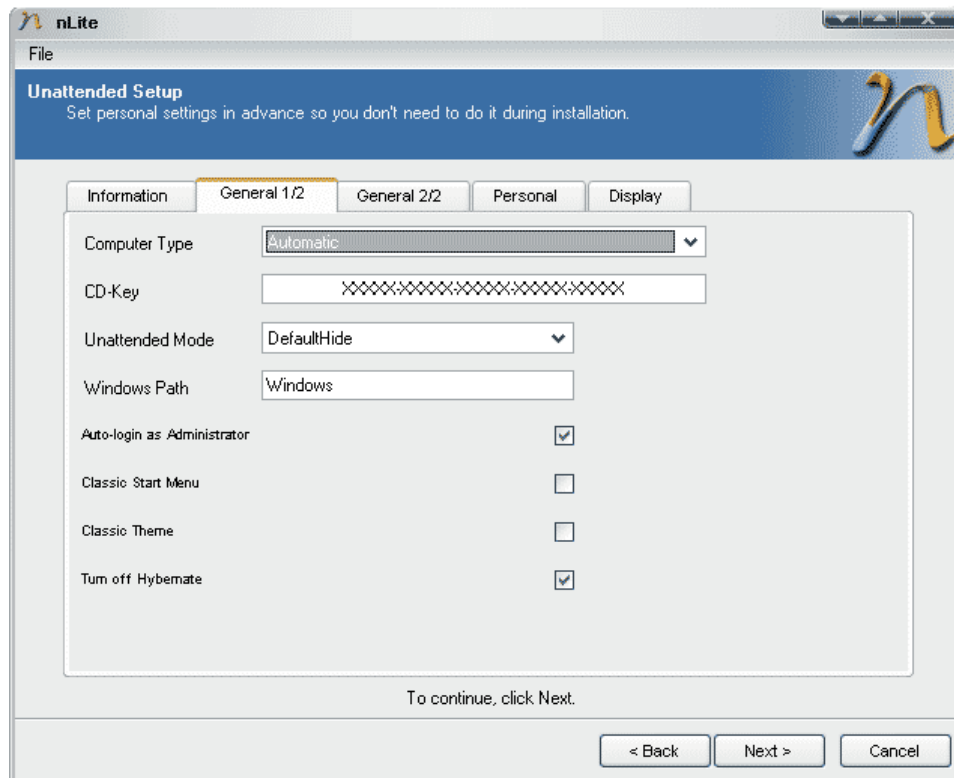
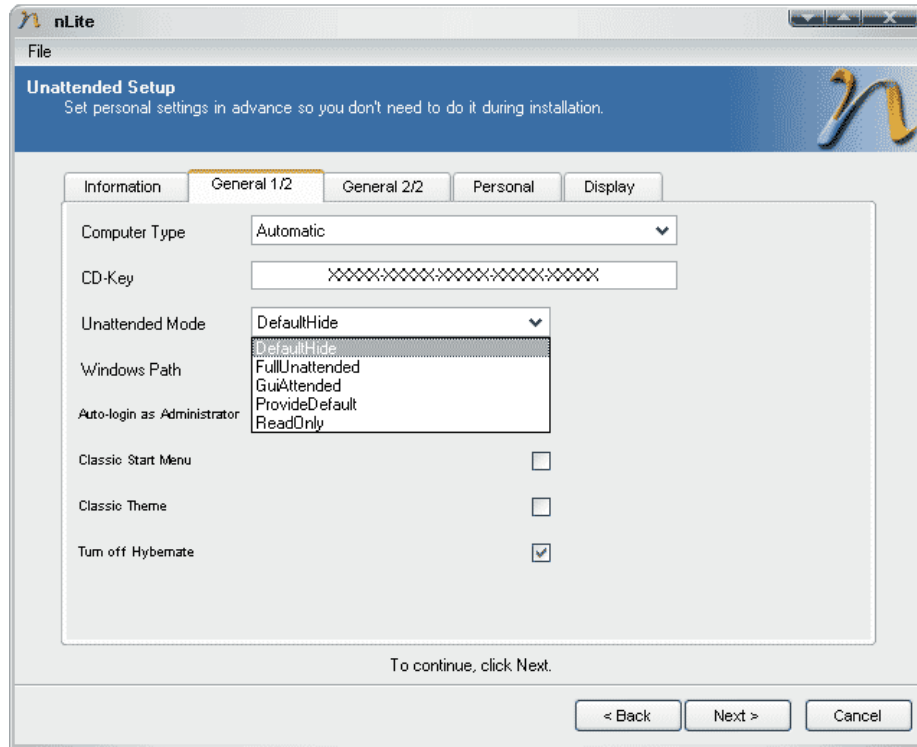
- We're coming now to the next part of the nLite process - the unattended settings. You can adjust this settings through moving over the tabs on top. If you want build an ISO that doesn't need much user intervention by the Windows-Setup this is the way to go for you.



- You still have the chance to leave and disable now Unattended...otherwise click on the tab 'General 1/2'



NLITE GUIDE

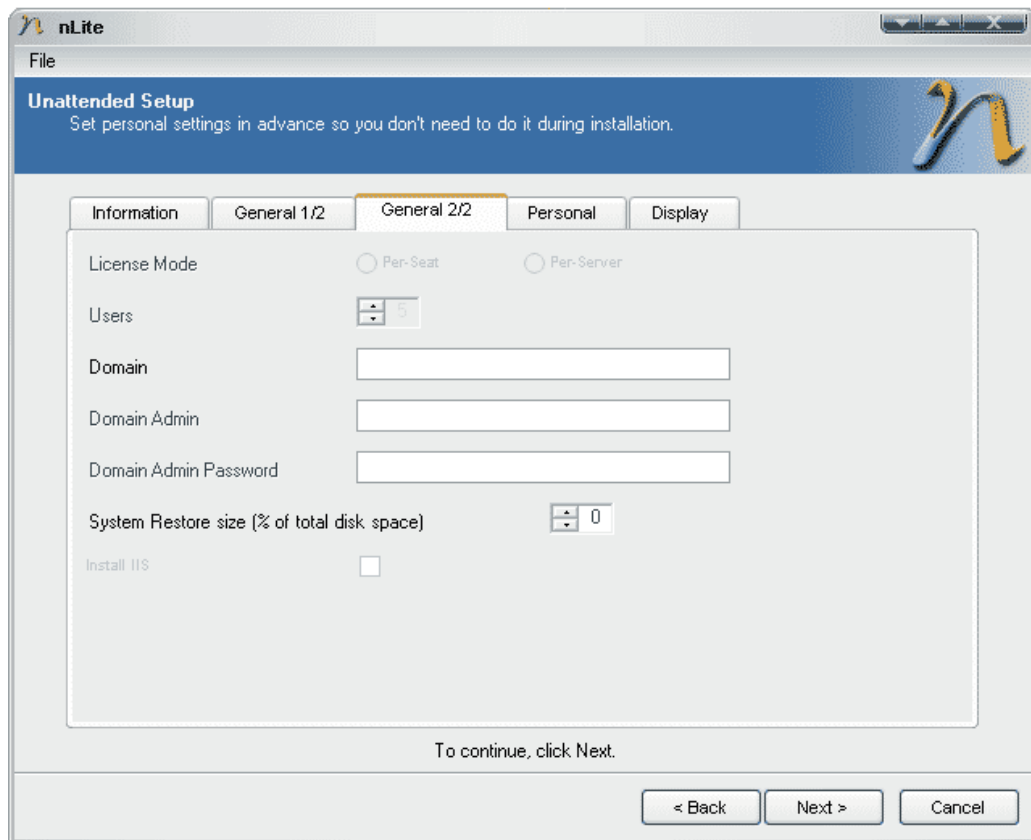


NLITE GUIDE



- On some computers with big ACPI problems (mostly older computers) it can be a good idea to select a Standard PC when the blue bootscreen by the setupprocess is coming up (pressing F5)...nLite makes this (or another selection) possible to choose as a fixed option on your modded Boot-CD (Computer Type). The first 4 textfolders are important, the 4 checkboxes under that optional. 'ComputerType' Automatic, 'Unattended Mode' FullUnattended and 'Windows Path' Windows works till now good for me, but you must self know what works best for you. Don't forget to fill in your own CD-Key.

Click 'Next'



If you're going to setup a server the tab 'General 2/2' is surely something you're looking for. Choose Licences Mode, how many workstations are connecting to the server, the name of the Domain and the Domain Admin and his Password. The size of the System Restore and Install IIS is an option that is not only for Windowsserver-Versions (but IIS is self a webserver...out-of-the-box with ASP-Support)

Click 'Next'

NLITE GUIDE



The screenshot shows the 'Personal' tab of the nLite Unattended Setup wizard. The window title is 'nLite' and the subtitle is 'Unattended Setup'. Below the subtitle is the instruction: 'Set personal settings in advance so you don't need to do it during installation.' The 'Personal' tab is selected, and the following settings are visible:

Full Name	<input type="text"/>		
Admin Password	<input type="password"/>	Confirm	<input type="password"/>
Computer Name	<input type="text" value="MACHINE"/>		
Organization	<input type="text"/>		
Workgroup	<input type="text" value="workgroup"/>		
Language	<input type="text" value="English (United States)"/>		
Timezone	<input type="text" value="GMT-06:00 Central Time (US & Canada)"/>		

To continue, click Next.

< Back Next > Cancel

- The tab 'Personal' holds (like his name says) some personal settings like Admin Password, Computer Name, Workgroup Name or Language Settings and Timezone.

Click 'Next'

The screenshot shows the 'Display' tab of the nLite Unattended Setup wizard. The window title is 'nLite' and the subtitle is 'Unattended Setup'. Below the subtitle is the instruction: 'Set personal settings in advance so you don't need to do it during installation.' The 'Display' tab is selected, and the following settings are visible:

Be careful to use only values supported by your Monitor and Display Adapter.

Color Depth	<input type="text" value="Default"/>	
Screen Resolution	<input type="text" value="Default"/>	<input type="button" value="Custom"/>
Refresh Rate	<input type="text" value="Default"/>	<input type="button" value="Custom"/>

To continue, click Next.

< Back Next > Cancel

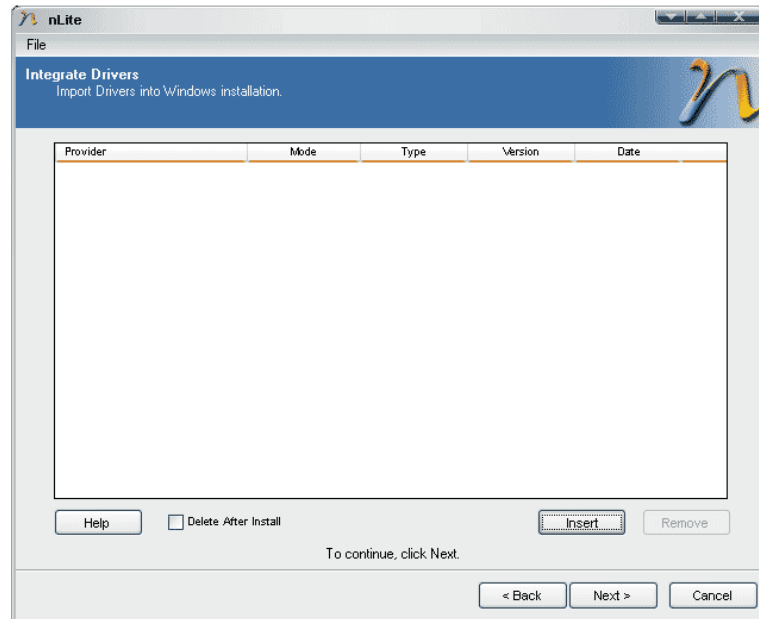
NLITE GUIDE



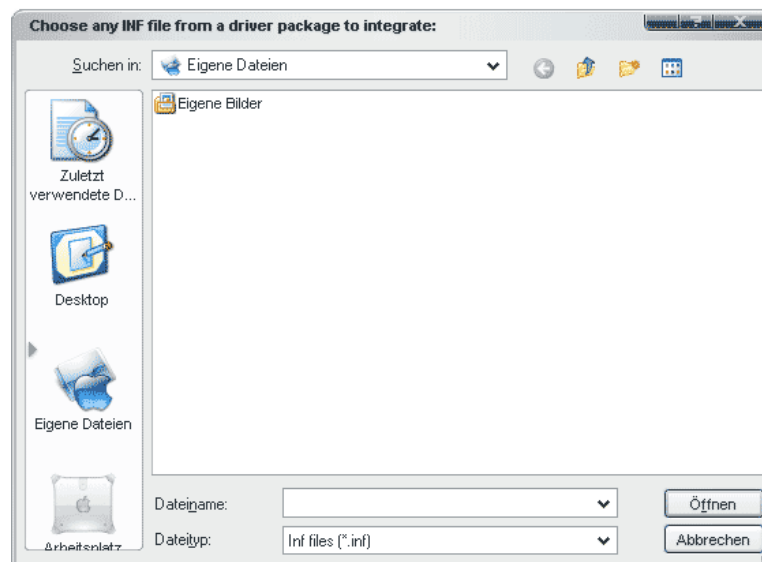
- The last tab is called 'Display'. Perhaps you like this tab; myself, i have no need for it.

Don't overlook the warning: " Be carefully to use only values supported by your Monitor and Display Adapter!"

- Click "Next" for the "Integrate Driver" window



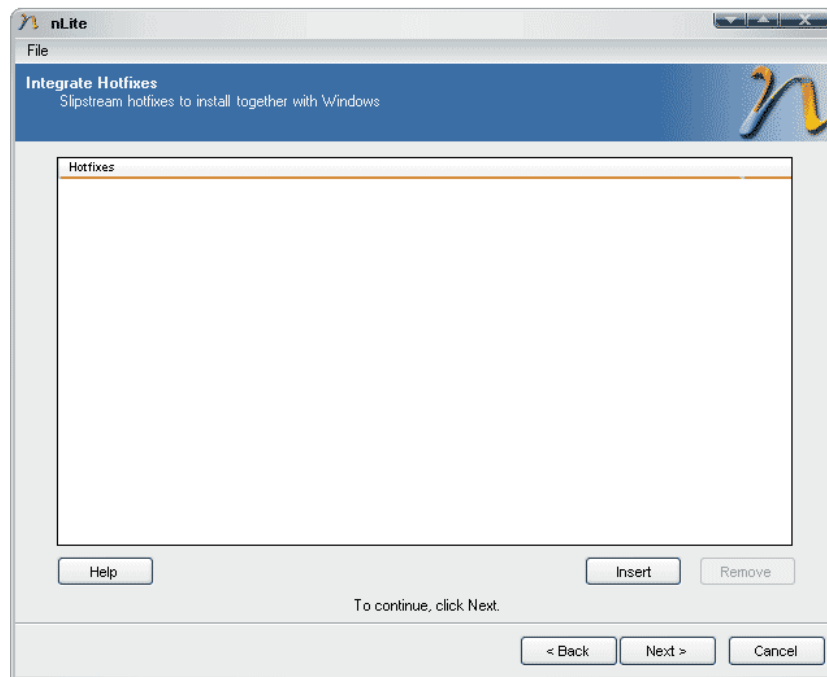
- If you want delete the drivers after installation activate the checkbox. That has no influence for the installation self; it only does delete the files taken for the installation. Over clicking on "Insert" you are able to point to *.inf files to import them.



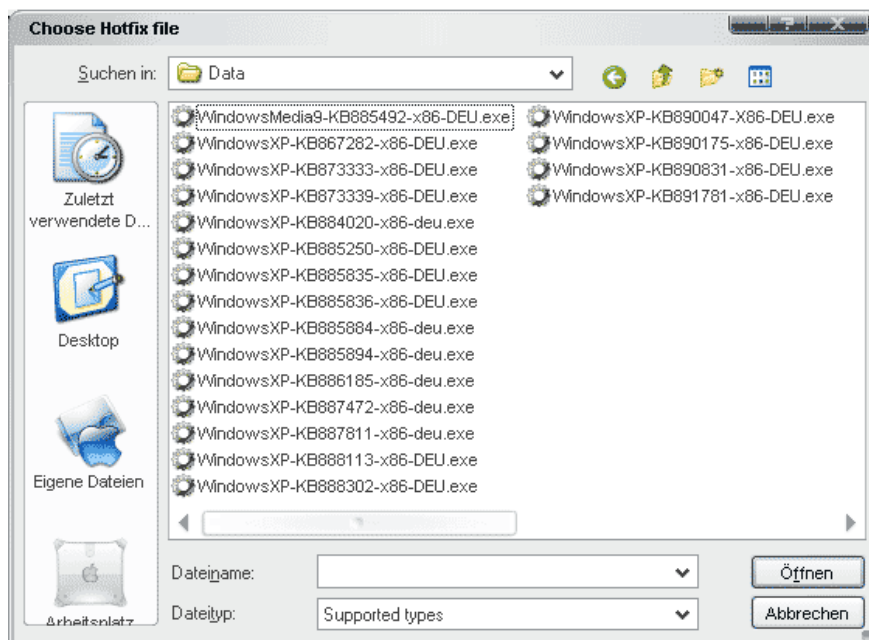


Like you see in the window above...i haven't integrate some drivers :-)

- Integrate hotfixes goes nearly the same way like integrate drivers.



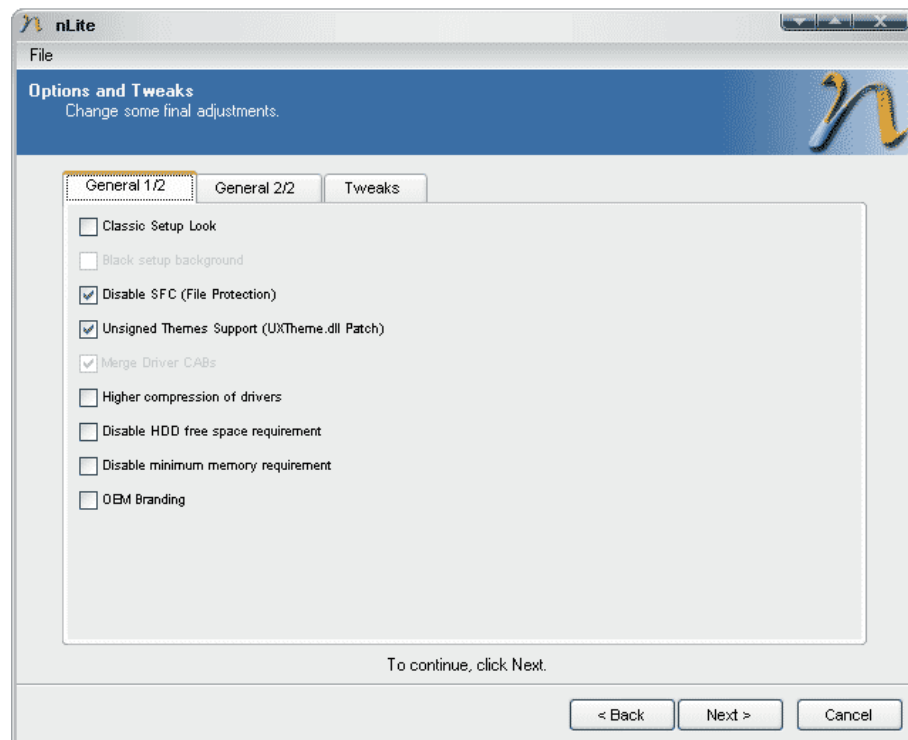
- Click on "Insert" and point to the hotfixes (not only to the folder where they are laying).





That was all about integration of drivers and hotfixes. Easy, wasn't it? In my eyes nuhi has done a great job to make it for everyone as simple as possible. There is no big knowledge needed for doing all these things here. We should be thankful for that...

- Now we come to another very cool part of nLite: Option and Tweaks. Move for that on the tabs on top of the windows.

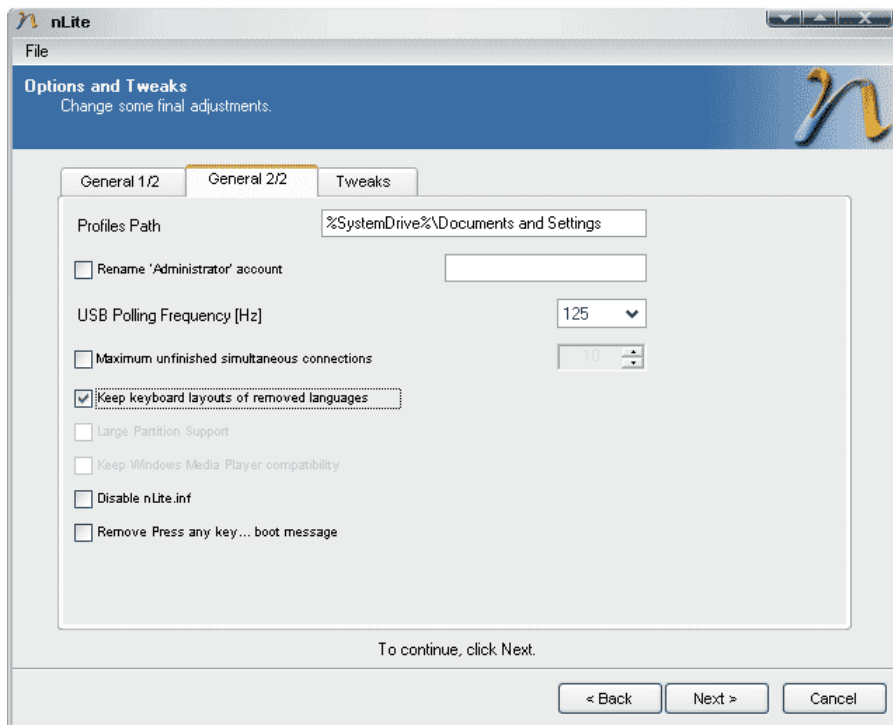


- This is something I really like...options for disable SFC and Unsigned theme support (by patching the file uxtheme.dll).

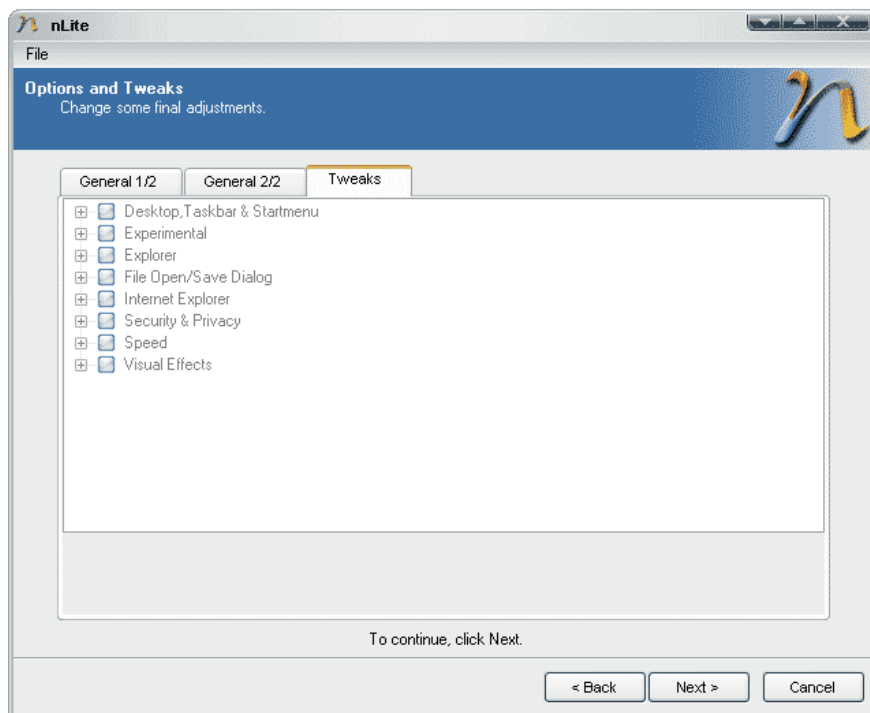
Setting the checkbox by "Disable SFC (File Protection)" will stop Windows from restoring system files (or better said: What Windows think is a system file) from the DLLCache to the original location if you delete them.

Setting the checkbox by "Unsigned Theme Support " is cool when you like another design than Luna or the classic style (or Royal). Myself, I don't like Luna. My preference are msstyles from StefankA or Kol.

NLITE GUIDE



- Some more options to choose...
In my eyes the most helpful is "Maximum unfinished simultaneous connections"

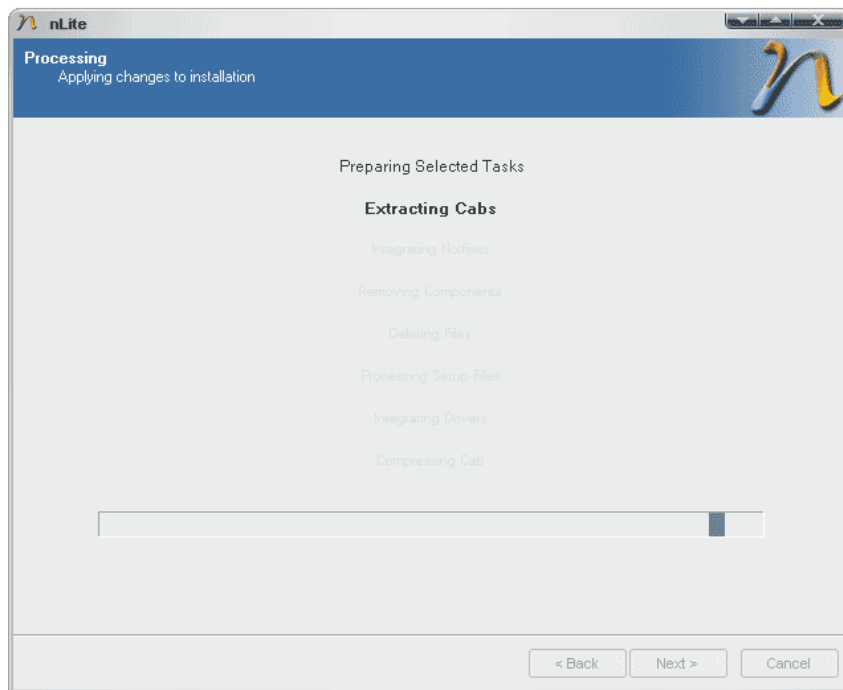


NLITE GUIDE

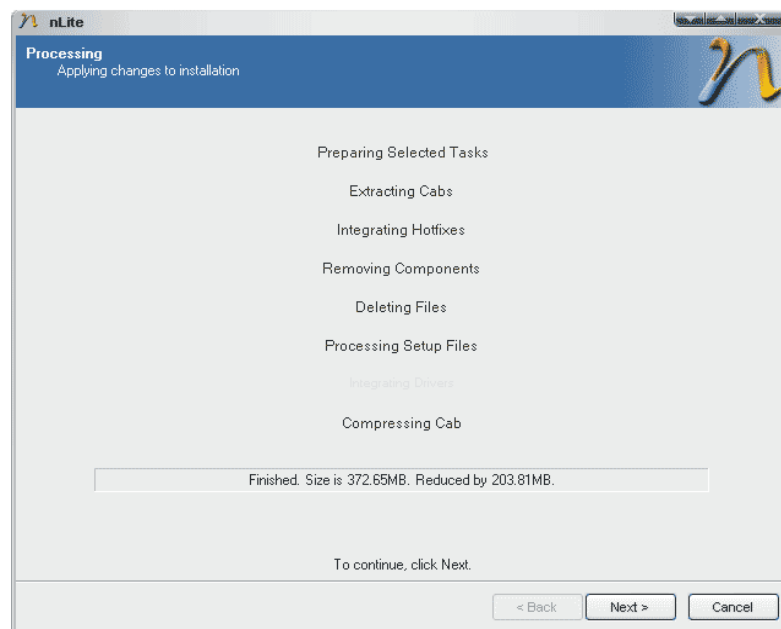


- Tweaks, Tweaks & Tweaks. Surely you will find here some options you always had made after a Setup-Installation :-)

AND NOW . . .



... the buildprocess begins after a click on "Next". Belonging on the speed of your machine and the settings you've made the building goes faster or longer

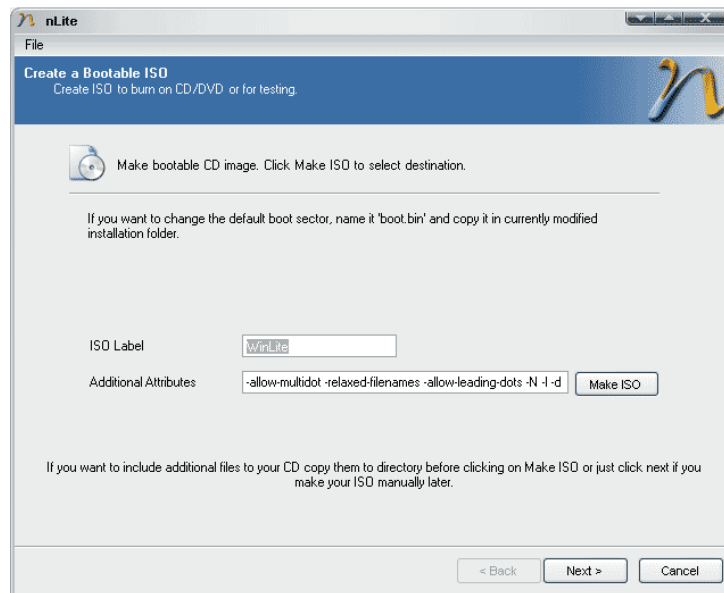


NLITE GUIDE



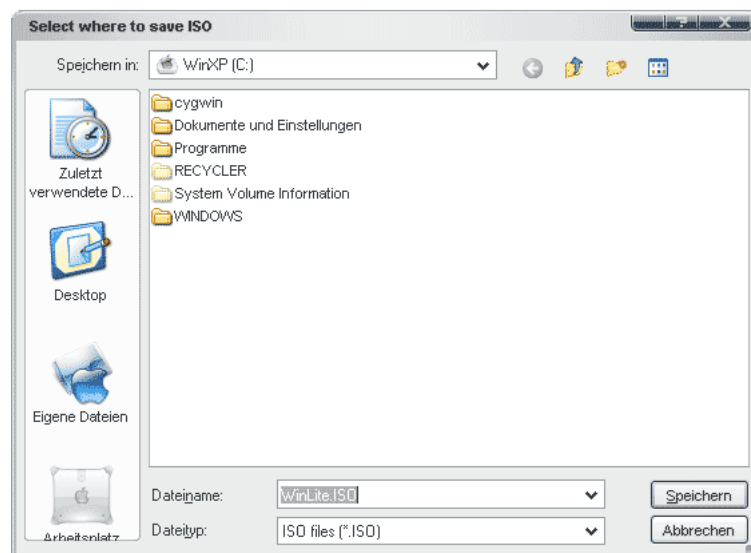
- The building of modding infs, extracting, removing, deleting, compressing or whatever to kick the fat blast out of your w2k/XP or w2k3 is done. We are just a few clicks away from the finish :-)

Click "Next"



- We must now generate an ISO-Image that can easy burned with Nero, Alcohol or another burnttool on a CD. Under "ISO Label" you can give the ISO-Image a name you want. Let all under "Additional Attributes" stay as it is; except you really know what you make.

Click on "Make ISO"





Select the place where you wanna save the ISO-Image.

Click on "Save" ('Speichern' means the same but is in german language).
Generating an ISO take also a little time...take it easy :-)

▪ ALL DONE !



- You are nLited now ;-)

Don't forget that nLite is till now freeware! For me it is just a great and very special tool...I have not seen one like this before! If you like it too it is very welcome to post your experience with it in the MSFN Forum. Let us make this great tool as good as is possible.

I hope that all works for you like written here but i can't give a guarranty.