

How to Create a bootable USB Memory Key

(Bay-Wolf.com)

If you do not have a floppy disk drive, you may want to create a bootable USB memory key which will allow you to boot into a pure DOS environment. This can be very useful if you want to flash your BIOS. Here is a step by step procedure on how to perform this operation.

NOTE: Your computer must support booting from a USB device in order to boot from the USB Memory Key.

Step 1

Download and install the Windows based HP USB Disk Format Tool. For your convenience, you can download it from [HERE](#).

Step 2

Download the Windows 98 system files from [HERE](#). This is a zip file that contains all of the system files that you will need. Create a new folder and extract these files into the folder that you just created. Make sure that you preserve the directory structure.

Step 3

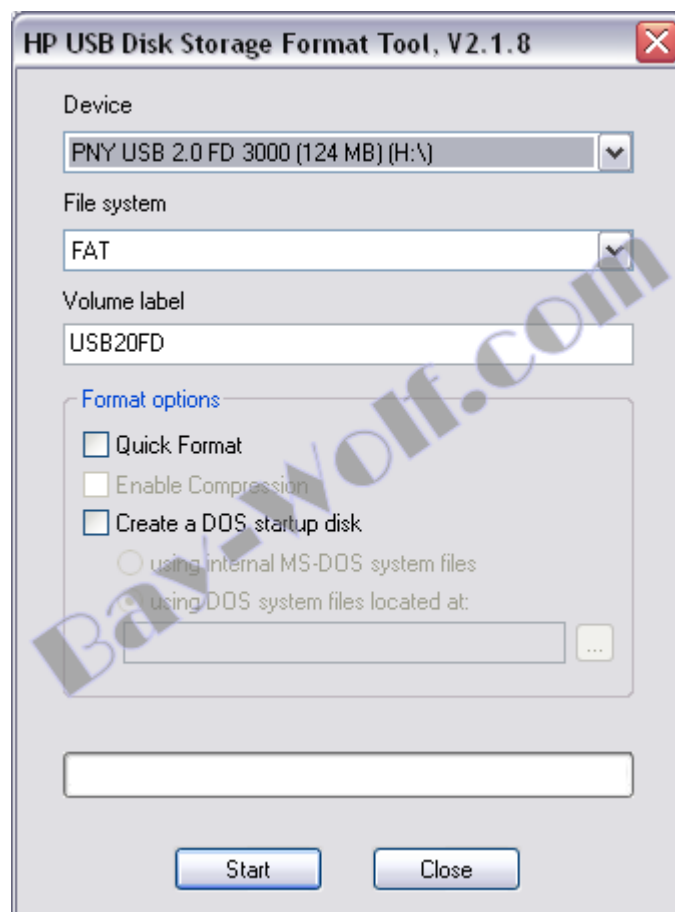
Insert the USB Memory Key into the USB port of your computer.

NOTE: Make sure that the lock/unlock switch (if present) is set to the unlock position.

Step 4

Launch the HP format tool program.

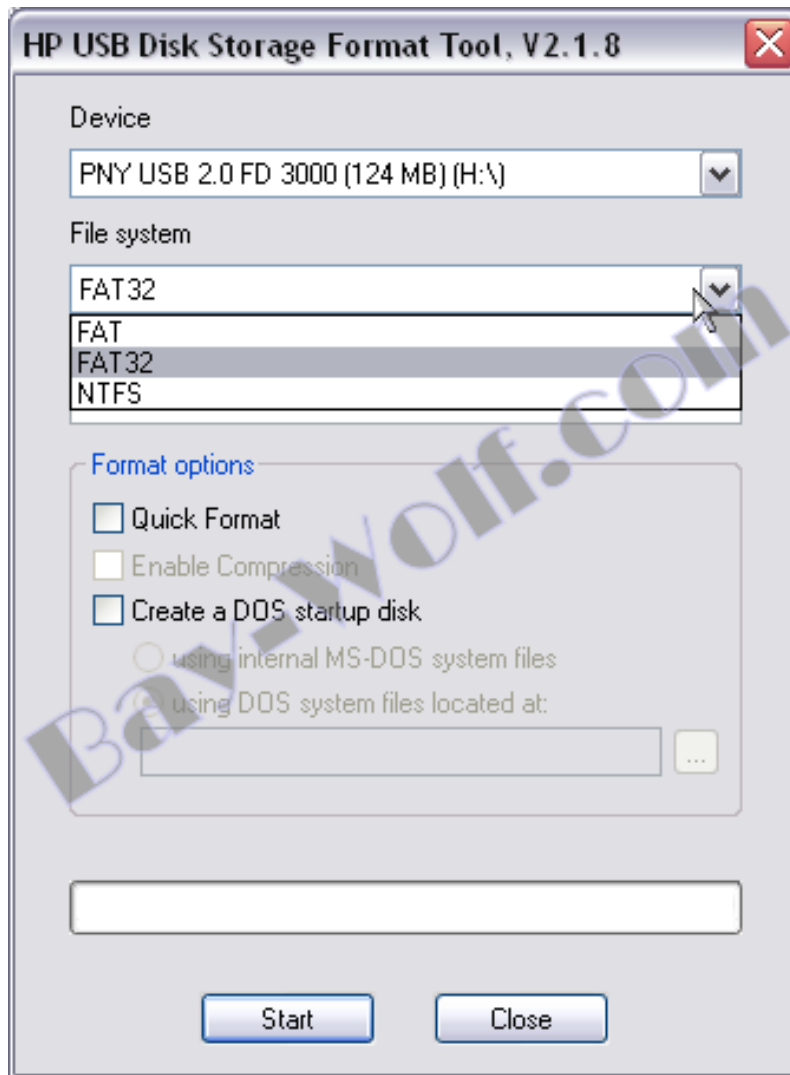
Under the device drop down list, make sure that the USB memory key is selected.



How to Create a bootable USB Memory Key (Bay-Wolf.com)

Step 5

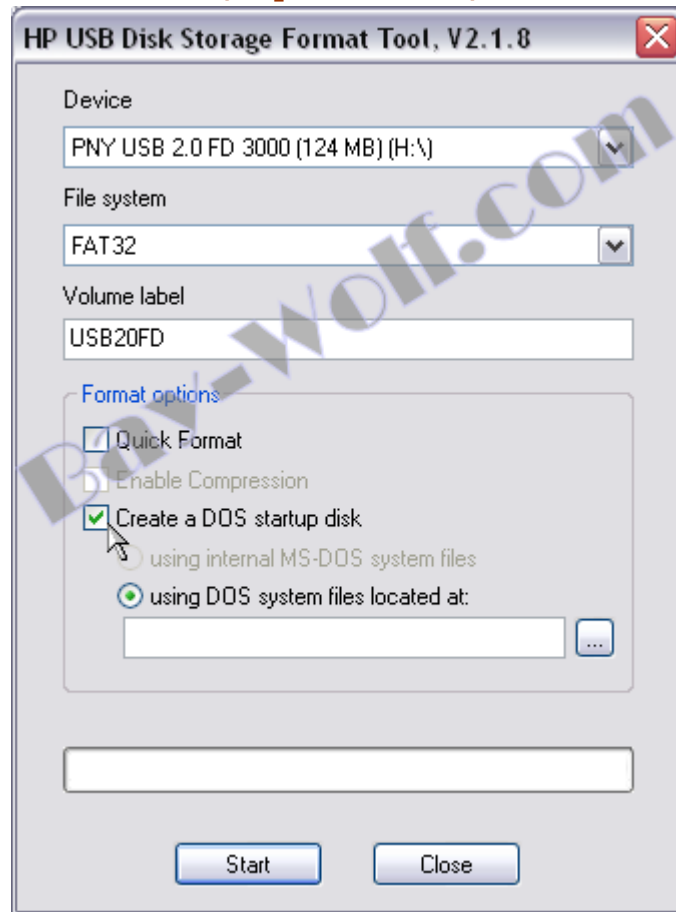
Under the file system drop down list, select FAT32. This is important to do correctly.



Step 6

Check the box next to Create a DOS startup disk.
Select "using DOS system files located at:
Then click on the square box with 3 dots on it.

How to Create a bootable USB Memory Key (Bay-Wolf.com)



Step 7

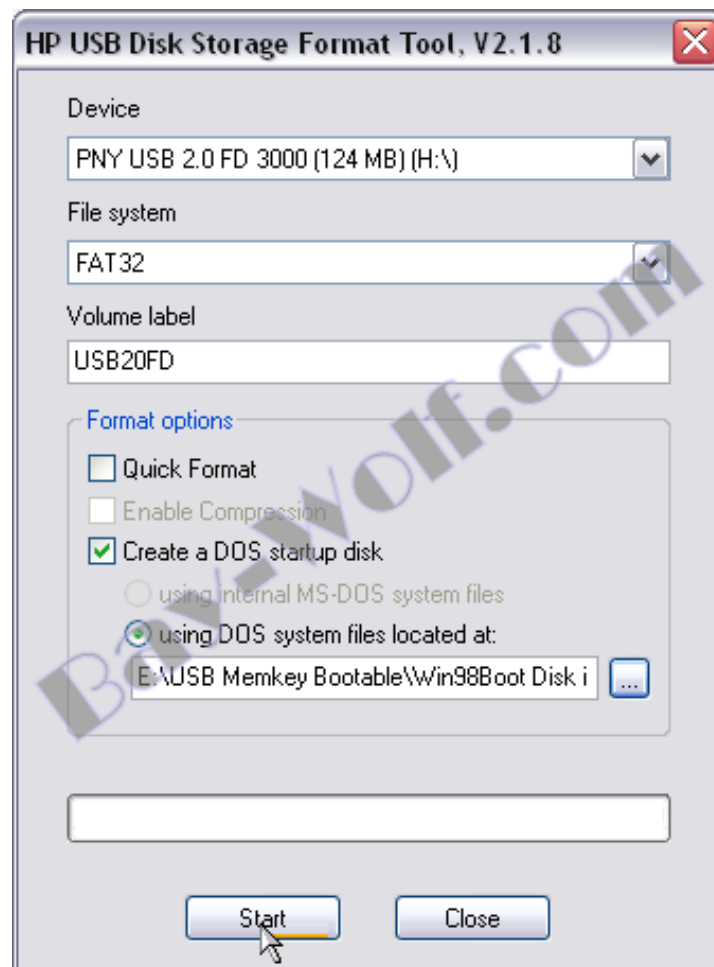
Browse to the folder that you extracted the Win98 system files and then click on the OK button.



How to Create a bootable USB Memory Key (Bay-Wolf.com)

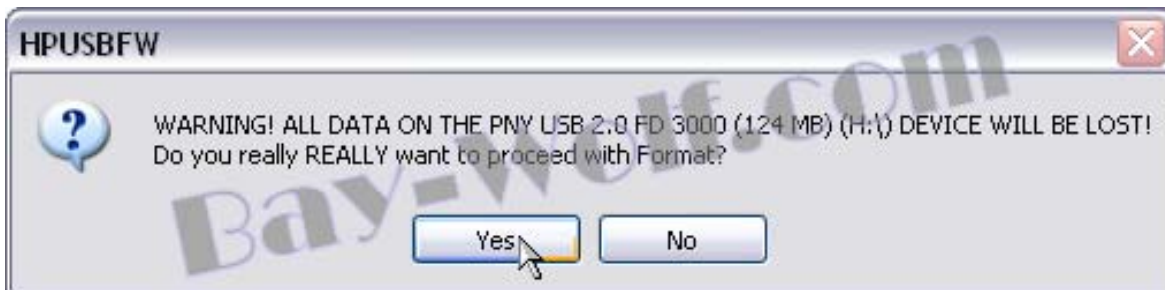
Step 8

Now click the Start button.



Step 9

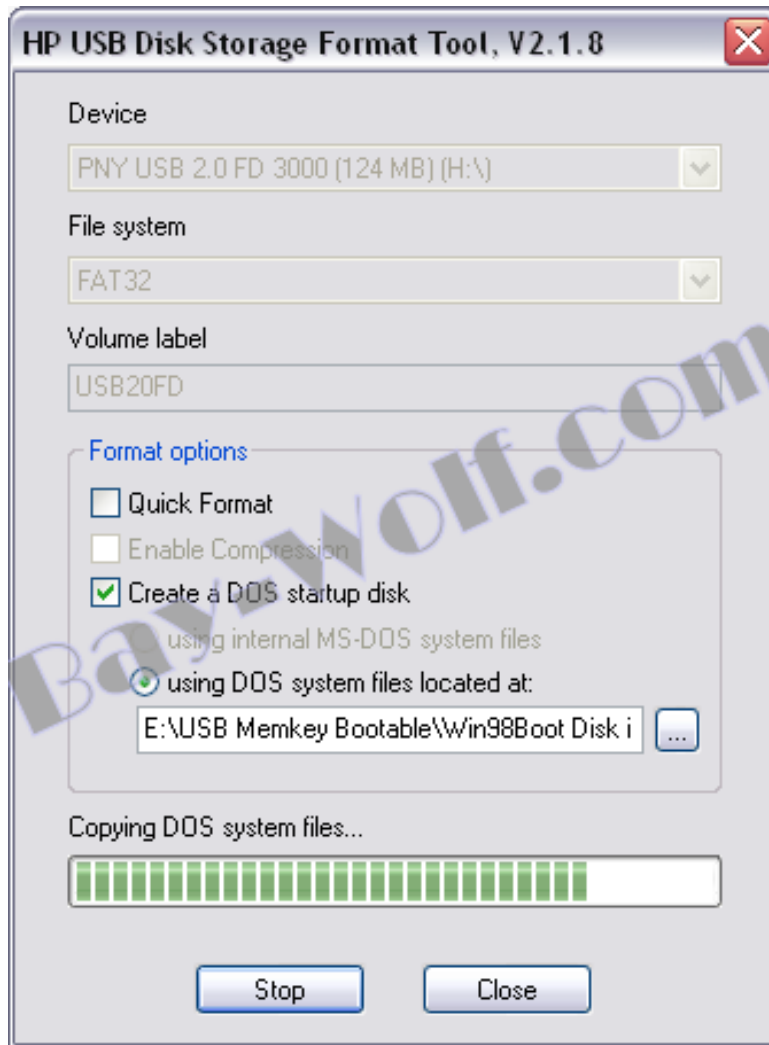
You will receive a warning message. Make sure you have the USB memory key selected. If you are sure, then click the Yes button.



Step 10

Your USB memory key is now being formatted and the DOS system files will be copied onto it. Once the program has completed the operation, click on the Close button. You now have a bootable USB memory key.

How to Create a bootable USB Memory Key (Bay-Wolf.com)



- On the USB memory key, you will see these files. These are the basic Win98 system files.

| Name | Size | Type | Date Modified |
|-------------|--------|--------------------|-------------------|
| COMMAND.COM | 92 KB | MS-DOS Application | 5/11/1998 7:01 PM |
| IO.SYS | 218 KB | System file | 5/11/1998 7:01 PM |
| MSDOS.SYS | 0 KB | System file | 5/11/1998 7:01 PM |

- If you want to have CDROM support when you boot from your USB memory key, copy these files, including the CDROM folder to the memory key. These files are the ones that you extracted earlier to a folder.
- If you copy all of these files to the memory key, you will have mouse support for any DOS program that support this feature.

How to Create a bootable USB Memory Key

(Bay-Wolf.com)

- You will also have many other DOS utilities that are very useful.

| Name | Size | Type | Date Modified |
|--------------|--------|-----------------------|--------------------|
| CDROM | | File Folder | 6/15/2005 7:27 PM |
| AEFDISK.EXE | 14 KB | Application | 6/28/1999 1:04 AM |
| ATTRIB.EXE | 15 KB | Application | 5/6/1998 8:01 PM |
| AUTOEXEC.BAT | 1 KB | MS-DOS Batch File | 12/20/1999 9:23 PM |
| BOOTLOG.PRIV | 1 KB | PRV File | 3/13/1998 1:01 PM |
| BOOTLOG.TXT | 1 KB | Text Document | 11/1/1996 9:18 AM |
| CLEARHDD.EXE | 1 KB | Application | 12/27/1999 9:25 PM |
| COMMAND.COM | 92 KB | MS-DOS Application | 5/11/1998 7:01 PM |
| CONFIG.SYS | 1 KB | System file | 12/20/1999 9:48 PM |
| CWSDPMI.EXE | 20 KB | Application | 9/4/1998 4:46 AM |
| DELTREE.EXE | 19 KB | Application | 5/11/1998 8:01 PM |
| DRVSPACE.BIN | 68 KB | CDROM Image Files | 5/11/1998 7:01 PM |
| EDIT.COM | 69 KB | MS-DOS Application | 5/6/1998 8:01 PM |
| EMM386.EXE | 123 KB | Application | 5/11/1998 8:01 PM |
| FDISK.EXE | 63 KB | Application | 5/11/1998 8:01 PM |
| FORMAT.COM | 49 KB | MS-DOS Application | 5/11/1998 8:01 PM |
| gmouse.com | 44 KB | MS-DOS Application | 9/8/1997 4:19 PM |
| HIMEM.SYS | 33 KB | System file | 5/11/1998 8:01 PM |
| IO.SYS | 218 KB | System file | 5/11/1998 7:01 PM |
| KICKNIC.COM | 11 KB | MS-DOS Application | 7/3/2000 7:53 PM |
| MOUSE.BAT | 1 KB | MS-DOS Batch File | 6/26/1999 12:22 PM |
| MOUSE.COM | 32 KB | MS-DOS Application | 6/18/1990 12:00 PM |
| MSCDEX.EXE | 25 KB | Application | 5/11/1998 8:01 PM |
| MSDOS.SYS | 0 KB | System file | 5/11/1998 7:01 PM |
| PKUNZIP.EXE | 29 KB | Application | 2/1/1993 2:04 AM |
| PRESIZER.EXE | 67 KB | Application | 2/20/2000 1:33 AM |
| PRESIZER.LOG | 33 KB | Text Document | 6/4/2000 1:11 AM |
| Readme.1st | 8 KB | 1ST File | 2/20/2000 1:33 AM |
| Readme.txt | 1 KB | Text Document | 2/18/1999 2:52 PM |
| STARTERS.DOC | 12 KB | Microsoft Word Doc... | 2/20/2000 1:33 AM |
| SYS.COM | 19 KB | MS-DOS Application | 5/6/1998 8:01 PM |