

Open SUSE 11.0 USB



Here is a tutorial guide to make openSUSE 11.0 LiveUSB with the easiest way :

Benefit

1. Tutorial can be used on Linux or Windows.
2. Do not need to install openSUSE onto hard disk for making LiveUSB as it was with KIWI. Just download the LiveCD ISO image and a tools for make an extract of ISO content (7-zip on Windows and mount -o loop tips on Linux)
3. Can used FAT 32 file system for interoperability (marketing hype) and mobility of data. Flash disk could be accessing by various OS
4. Simple, only need a few step
5. Fast process, required a few minutes for copying ISO image and initrd process

Preparation

1. Preparing USB Flash Disk, 1 GB or more
2. If using Windows for making LiveCD, download latest version of syslinux
3. Download modified initrd - called initrdud - from this link. (it's free ftp server which deleted any contents every 2 week. You could find another location from my personal blog uploads folder). The modified initrd contains modification from LiveCD boot into LiveUSB boot and addon for NLS modules (code page and character set) for FAT32 file system on USB. NOTED : for openSUSE 11.0 GM, please used this initrdud instead. Take a look on this post for the reason.

Open SUSE 11.0 USB

Make A Bootable Liveusb On Windows

1. Run your Windows OS
2. Plug in USB Flash Disk
3. Extract syslinux on Windows folder
4. Open DOS Prompt (Command Prompt)
5. Navigate into win32 folder on syslinux folder
6. run `syslinux -ma driver-letter-of-flash-disk`, eg : `syslinux -ma E:` if E is your USB Flash Disk. Note : The process need a few second to make a bootable USB disk with syslinux, so don't wait the process finished for 1 minutes or more

On Linux

1. Find your USB disk with `df -h` on konsole.
2. Install syslinux and run `syslinux /dev/sdx` from konsole where `/dev/sdx` is your USB device
3. If the above process failed for making bootable USB disk, try another tips

Processing The Image

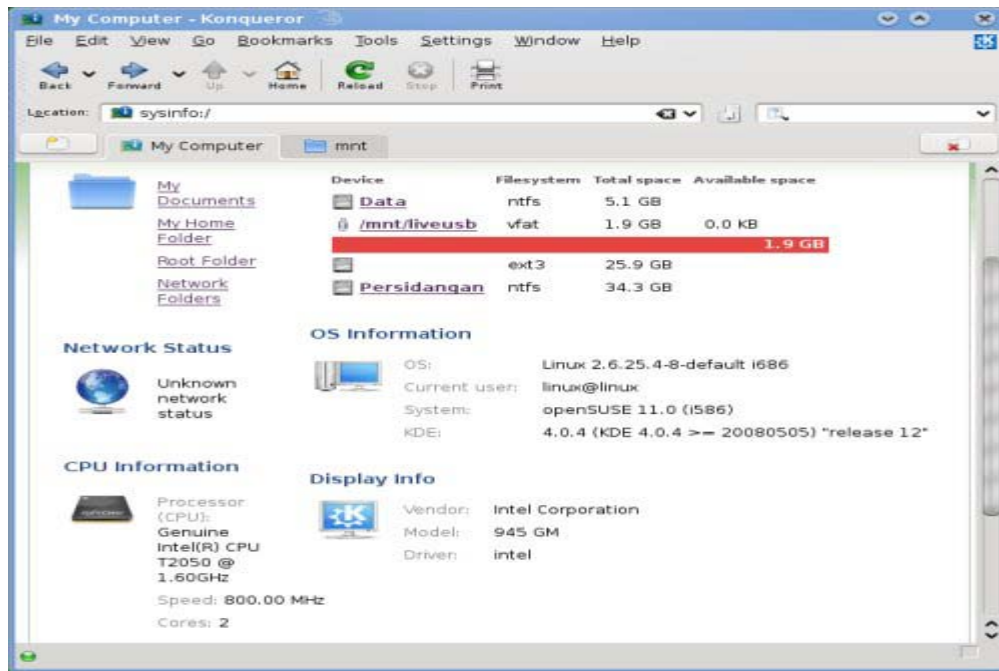
1. Plug in bootable USB disk
2. Create temporary folder for mounting LiveCD ISO Image `mkdir liveiso`
3. Mount ISO image into specified folder `mount -o loop openSUSE-11.0-RC1-KDE4-LiveCD-i386.iso liveiso/` (I'm currently using openSUSE 11.0 RC1 KDE. Make a proper changes to your ISO image)
4. Copying all of liveiso content (mounted ISO content) into USB disk
5. Copying all of content on `boot/i386/loader` folder into root folder of USB disk
6. Rename `isolinux.cfg` on root folder of USB disk into `syslinux.cfg`
7. copying `initrdud` into root folder of usb disk
8. Make a few modification into `syslinux.cfg`, so, USB live will boot with `initrdud`. Make a change to this line : `append initrd=initrd ramdisk_size=512000 ramdisk_blocksize=4096 splash=silent showopts` into `append initrd=initrdud kiwidebug=1 ramdisk_size=512000 ramdisk_blocksize=4096 splash=silent showopts kiwidebug=1` option will log any error while booting LiveUSB

Testing

1. Boot your computer with USB HDD as top of boot device priority or make a hot boot change by pressing F12, F8, F9 or any key according to your computer

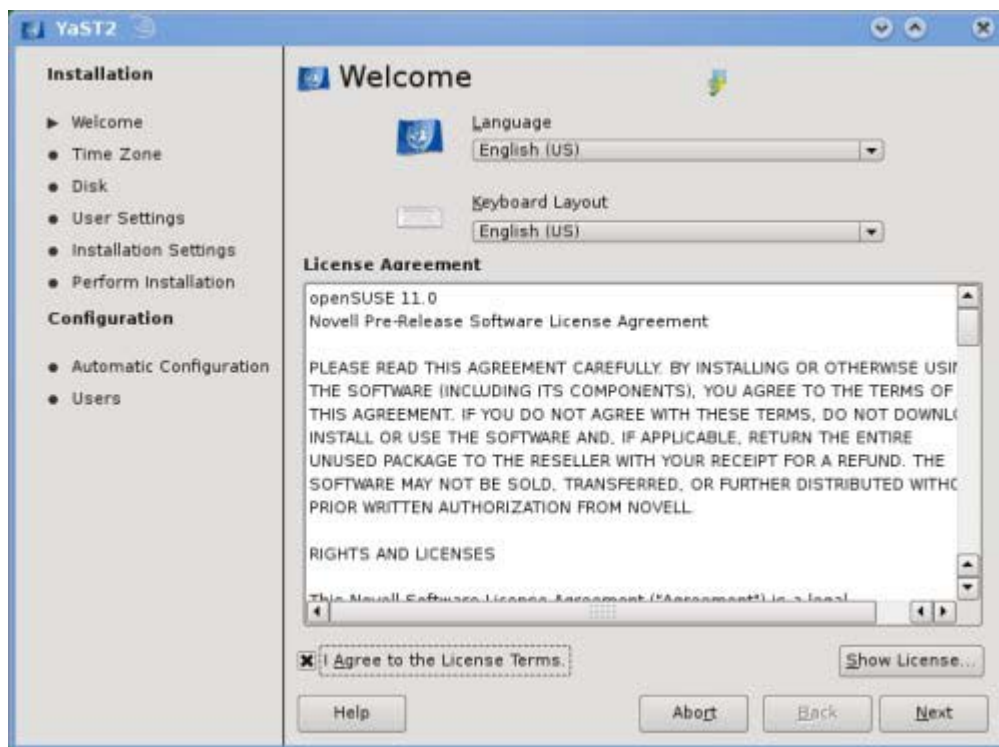
Open SUSE 11.0 USB

2. While booting, just press ENTER on boot option. Typing Live-System as mentioned on boot message will failed regarding kernel image



Liveusb Installation Screenshot

Below are some LiveUSB installation screenshot.



Open SUSE 11.0 USB

